

# STANDARDISATION OF DRUGS

**DR. ARUN S M, MD (HOM)**

**ASSISTANT PROFESSOR,**

**DEPARTMENT OF HOMOEOPATHIC PHARMACY,**

**KKC HOMOEOPATHIC MEDICAL COLLEGE & HOSPITAL,**

**PUTTUR.**

# IN RAW MATERIAL

- ▶ IDENTITY
- ▶ PURITY
- ▶ QUALITY

# DIFFERENT MEHODS

- ▶ Oranganoleptic
- ▶ Microscopic
- ▶ Phsical
- ▶ Chemical
- ▶ Biological

# ORGANOLEPTIC EVALUATION

- ▶ external morphology
  - Shape And Size
  - External Colour
  - External Markings
- ▶ Fracture
- ▶ Odor
- ▶ taste



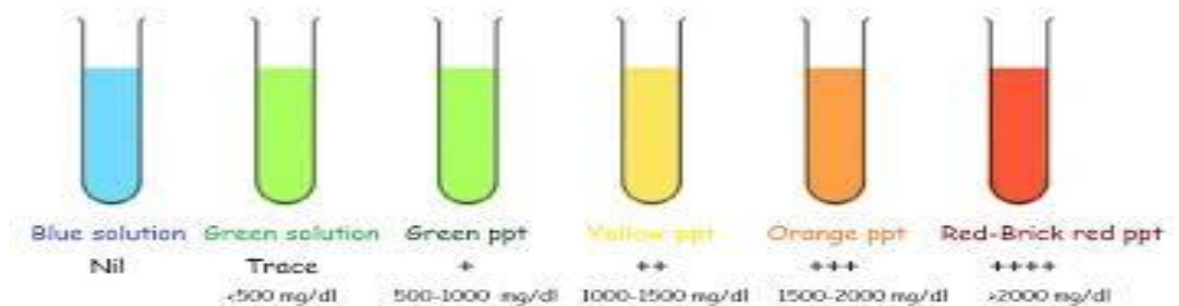
Sense of Smell



Sense of Touch

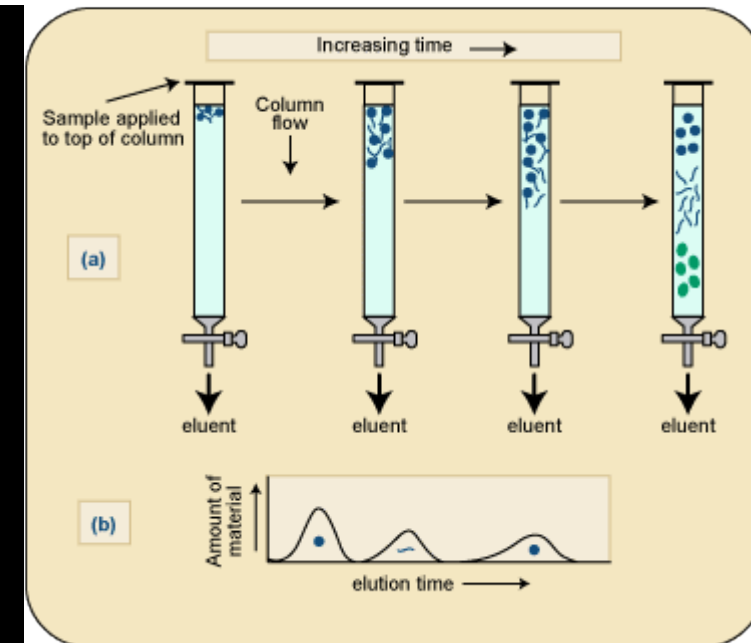
# MICROSCOPIC EVALUATION

- ▶ Histology
- ▶ Micro chemistry
  - a) Isolation of constituents
    - I. Micro sublimation
    - II. Chemical solvents
  - b) Identification of constituents
    - I. Crystallography
    - II. Melting point
    - III. Colour reaction test



# PHYSICAL EVALUATION

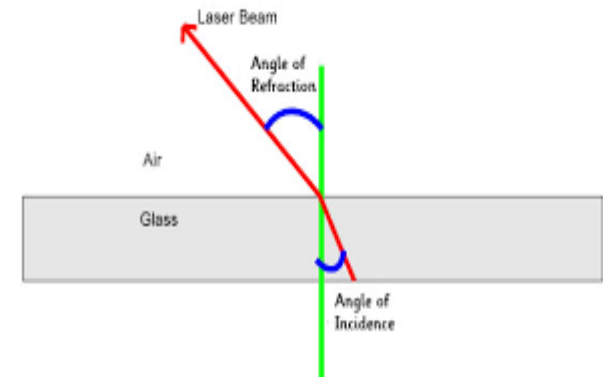
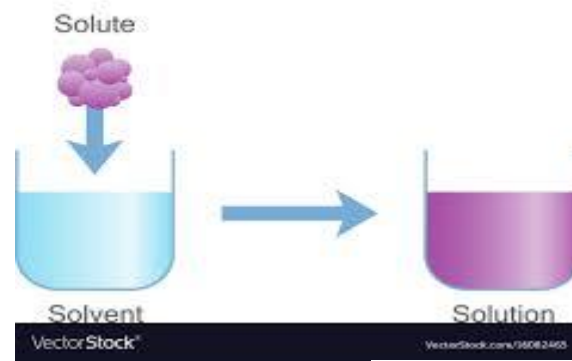
- ▶ Chromatographic
- ▶ Fluorescence test



# In general

- a) Solubility
- b) Melting point
- c) Specific gravity
- d) Congealing point
- e) Refractive index
- f) Optical rotation
- g) Water content or loss on drying

## Solubility



# CHEMICAL EVALUATION

- ▶ Colour reaction test
- ▶ Acid value
- ▶ Iodine value
- ▶ Saponification value
- ▶ Ester value
- ▶ Ash value
- ▶ Sulphated ash value
- ▶ Determination of acid insoluble ash
- ▶ Determination of water soluble ash





# BIOLOGICAL EVALUATION





thank you!