

# **DISEASE CLASSIFICATION: A SUMMARY: ACCORDING TO DR.H.A ROBERT**

**ABOUT THE AUTHOR**

**Dr.Shilpee**

**Post graduate scholar**

**Department: Organon of medicine and homoeopathic Philosophy**

**State National Homoeopathic Medical College and hospital, Lucknow Uttar Pradesh -226010**

**Email ID: [yadavshilpee179@gmail.com](mailto:yadavshilpee179@gmail.com)**

# Summary of different stigmata

Let us summarize the different stigmata

we may get all shadings of all the stigmata in their groupings in our patients.

one stigma will predominate above all the others.

The accentuation of psora is function; the accentuation of the syphilitic taint is ulcerative; the accentuation of sycosis is infiltration and deposits.

PSORA

- 

FUNCTIONAL

SYPHLITIC

- 

ULCERATION

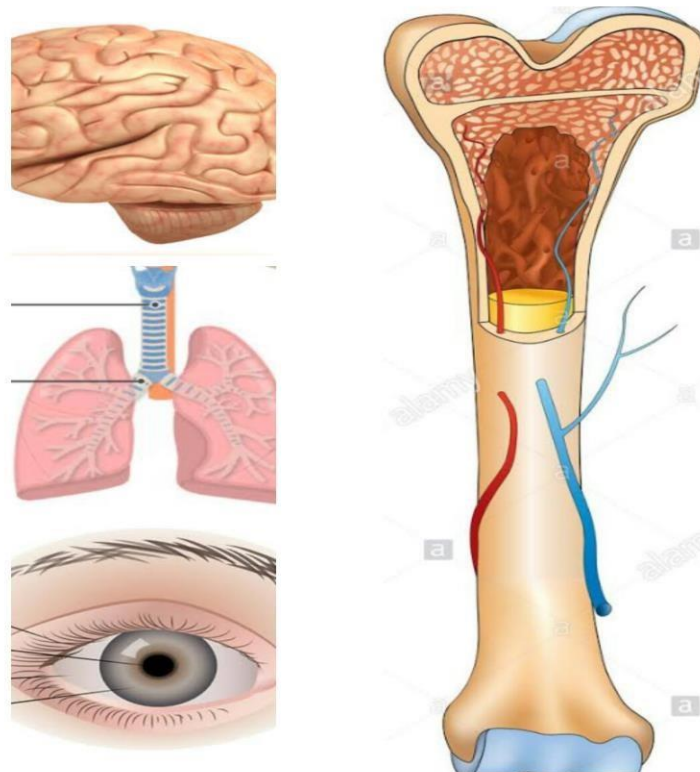
SYCOTIC

- 

INFILTRATION AND DIPOSITION

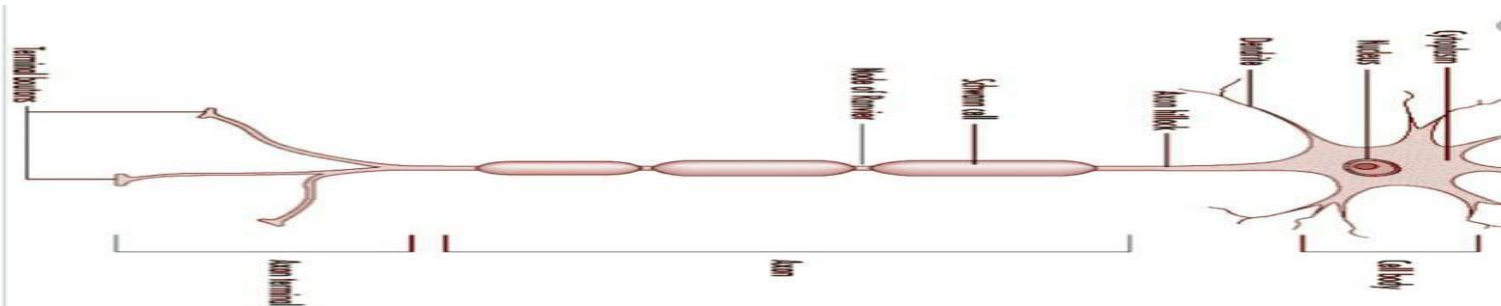
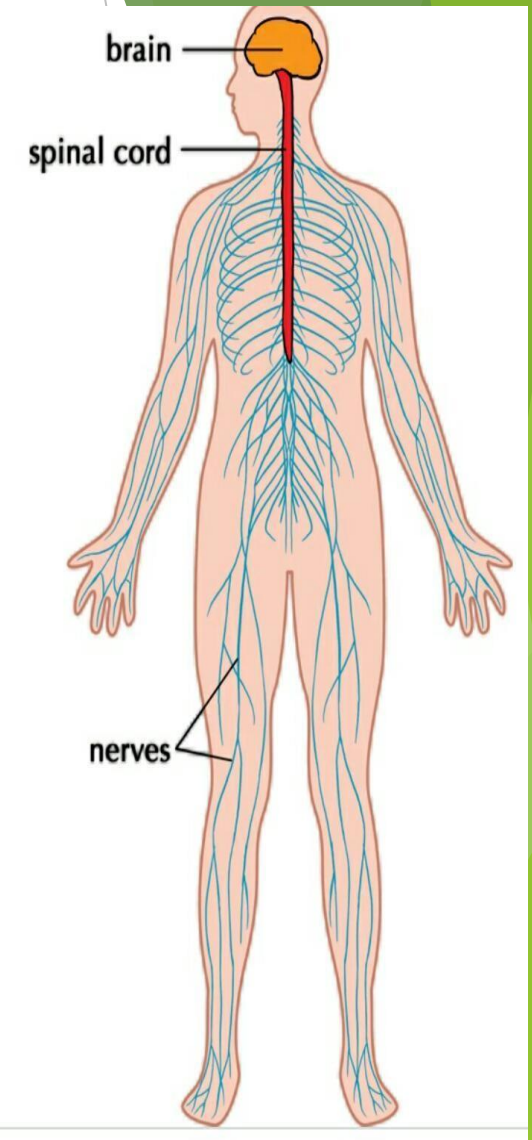
# Syphilitic stigmata

- ▶ When suppressed, the syphilitic stigma spends itself on the meninges of the brain, and affects the larynx and throat in general, the eyes, the bones and the periosteum.



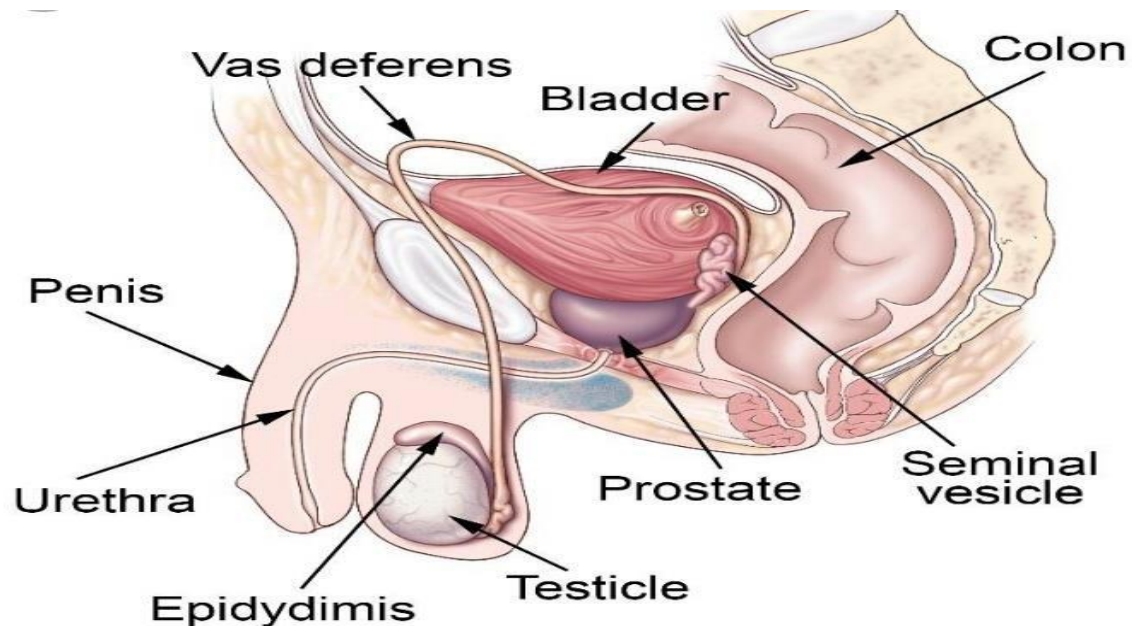
# Psoric stigmata and it's spread

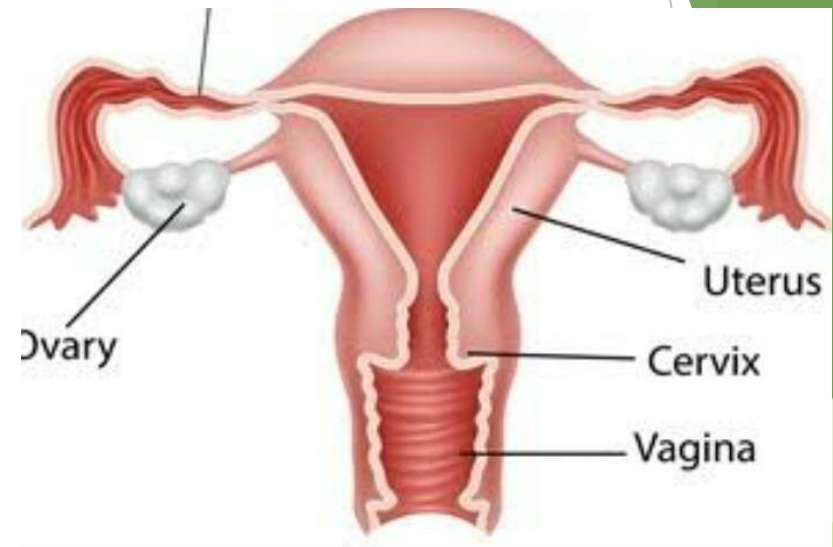
- ▶ Psora spends its action very largely upon the nervous system and the nerve centres, producing functional disturbances, which are > by surface manifestations.



# Sycotic Stigmata

- ▶ Sycosis attacks the internal organs, especially the pelvic and sexual organs. In this stigma we find the worst forms of inflammation, infiltration of the tissues causing abscesses, hypertrophies, cystic degeneration; when thrown back into the system by suppression this stigma causes dishonesty, moral degeneracy and mania.







# MENTAL SYMPTOMS OF SYCOTIC STIGMATA

The background features abstract, overlapping geometric shapes in various shades of green, ranging from light lime to dark forest green. These shapes are primarily located on the right side of the slide, creating a modern, layered effect. The text is positioned on the left side of the slide, set against a plain white background.

DISHONESTY

MORAL  
DEGENRACY

MANIA

# TREATMENT OF DIFFERENT STIGMATA

TAKE TOTALITY  
OF SYMPTOMS

SEE STIGMATA  
IN THAT  
INDIVIDUAL  
CASE AND  
STAGE OF  
DEVELOPMENT

GIVE THE  
MOST  
SIMILLIMUM  
REMEDY

# TREATMENT OF MIXED STIGMATA

IN CASE OF MIXED STIGMATA



THERE IS ALWAYS ONE STIGMATA PROMINENT



WHEN ONE STIGMATA RELIEVED ,NEXT PROMINENT



TREAT CONTINUOUSLY ,UNTIL THE PATIENT FREE FROM INHERITANCE OF GENERATIONS

|          | PSORA                                    | SYPHILIS                 | SYCOSIS                     |
|----------|------------------------------------------|--------------------------|-----------------------------|
|          | FUNCTINAL                                | ULCERATION               | INFILTRATION AND DIPOSITION |
| HEADACHE | MORNING<br>FRONTAL, TEMPORAL,<br>PARITAL | NIGHT<br>BASE OF BRAIN   | Midnight<br>VERTEX          |
| HAIR     | DRY AND SCALY                            | MOIST, THICK<br>, CRUSTY | FALLS OUT<br>CERCULLER SPOT |

EYE

NO STRUCTRURAL  
CHANGES

- UNCOMPLICATED  
STIGMA

- INTOLERANT OF  
ARTIFICIAL  
LIGHT
- ULCERATION OF  
LIDS
- **PTOSIS**

- ARTHRITIC  
TROUBLES OF  
EYE
- <RAINY

|      | PSORA                                                                                                                                                                               | SYPHILIS                                                                                                                       | SYCOSIS              |
|------|-------------------------------------------------------------------------------------------------------------------------------------------------------------------------------------|--------------------------------------------------------------------------------------------------------------------------------|----------------------|
| EAR  | <ul style="list-style-type: none"> <li>• SMALL OR MEDIUM SIZE</li> <li>• AUDITORY CANAL DRY AND SCALY</li> <li>• OVERSENSITIVENESS TO SOUND</li> <li>• NEVER TRANSPARENT</li> </ul> | <ul style="list-style-type: none"> <li>• LARGE EAR</li> <li>• PALE WHITE, TRANSPARENT</li> <li>• ULCERATION</li> </ul>         | -                    |
| FACE | <ul style="list-style-type: none"> <li>• INVERTED PYRAMID</li> <li>• LIPS RED AND DRY</li> </ul>                                                                                    | <ul style="list-style-type: none"> <li>• GRAYISH GREASY LIPS</li> <li>• DEEP FISSURE LIPS</li> <li>• TELL-TALE FACE</li> </ul> | BLUISH CYANOTIC FACE |

|      |                                                                                                                  |                                                                                             |                                                                                                                  |
|------|------------------------------------------------------------------------------------------------------------------|---------------------------------------------------------------------------------------------|------------------------------------------------------------------------------------------------------------------|
| NOSE | <ul style="list-style-type: none"><li>• OVERSENSITIVENESS TO ODOUR</li><li>• PERFUME MAKE ILL OR FAINT</li></ul> | <ul style="list-style-type: none"><li>• SMELL LOST</li><li>• BONE OF NOSE DISTROY</li></ul> | <ul style="list-style-type: none"><li>• RED NOSE</li><li>• SMELL LOST</li><li>• <b>FISHBRINE ODOUR</b></li></ul> |
|      |                                                                                                                  |                                                                                             |                                                                                                                  |



|               | PSORA         | SYPHILIS  | SYCOSIS                     |
|---------------|---------------|-----------|-----------------------------|
| MOUTH (TASTE) | BURNT         | METALLIC  | MUSTY OR FISHY              |
| SKIN          | DRY AND SCALY | ULCERATED | INFILTRATION AND DIPOSITION |

|                                                  | PSORA                                                                                               | SYPHILIS                                                                  | SYCOSIS                                                                                     |
|--------------------------------------------------|-----------------------------------------------------------------------------------------------------|---------------------------------------------------------------------------|---------------------------------------------------------------------------------------------|
| MODALTIES<br>(AGGRAVATION)<br><br>(AMELIORATION) | MORNING<br><br><ul style="list-style-type: none"> <li>LIE DOWN</li> <li>NATURAL DICHARGE</li> </ul> | <ul style="list-style-type: none"> <li>NIGHT</li> <li>DAY TIME</li> </ul> | <ul style="list-style-type: none"> <li>AFTER MIDNIGHT</li> <li>ABNORMAL DICHARGE</li> </ul> |

|        | PSORA                                                                                                                                                                                 | SYPHILIS                                                                                                                                                                                                                 | SYCOSIS                                                                                                                                                                                                                                   |
|--------|---------------------------------------------------------------------------------------------------------------------------------------------------------------------------------------|--------------------------------------------------------------------------------------------------------------------------------------------------------------------------------------------------------------------------|-------------------------------------------------------------------------------------------------------------------------------------------------------------------------------------------------------------------------------------------|
| MENTAL | <ul style="list-style-type: none"><li>• QUICK</li><li>• ACTIVE</li><li>• ANXIOUS</li><li>• FEAR OF DEATH</li><li>• SENSITIVE</li><li>• ABSENT MINDED</li><li>• RESTLESSNESS</li></ul> | <ul style="list-style-type: none"><li>• DULL</li><li>• ANXIETY AT NIGHT</li><li>• FIXED IDEA</li><li>• SLOW IN REACTION</li><li>• DEPRESSED</li><li>• MOROSE</li><li>• MISTRUSTFULL</li><li>• COMMITED SUICIDE</li></ul> | <ul style="list-style-type: none"><li>• CROSS, IRRITABLE</li><li>• ANXIETY WHEN WEATHER CHANGE</li><li>• SUSPICIOUS</li><li>• JEALOUS</li><li>• MOST MISCHIEVOUS</li><li>• SELFISH</li><li>• FORGRTFULL</li><li>• FITS OF ANGER</li></ul> |

# Reference:

**The principles and art of cure by Homoeopathy, A modern textbook by Dr. H.A Roberts ; reprint edition:2000  
page no . 180 - 241**